

Transfer Case ATC400

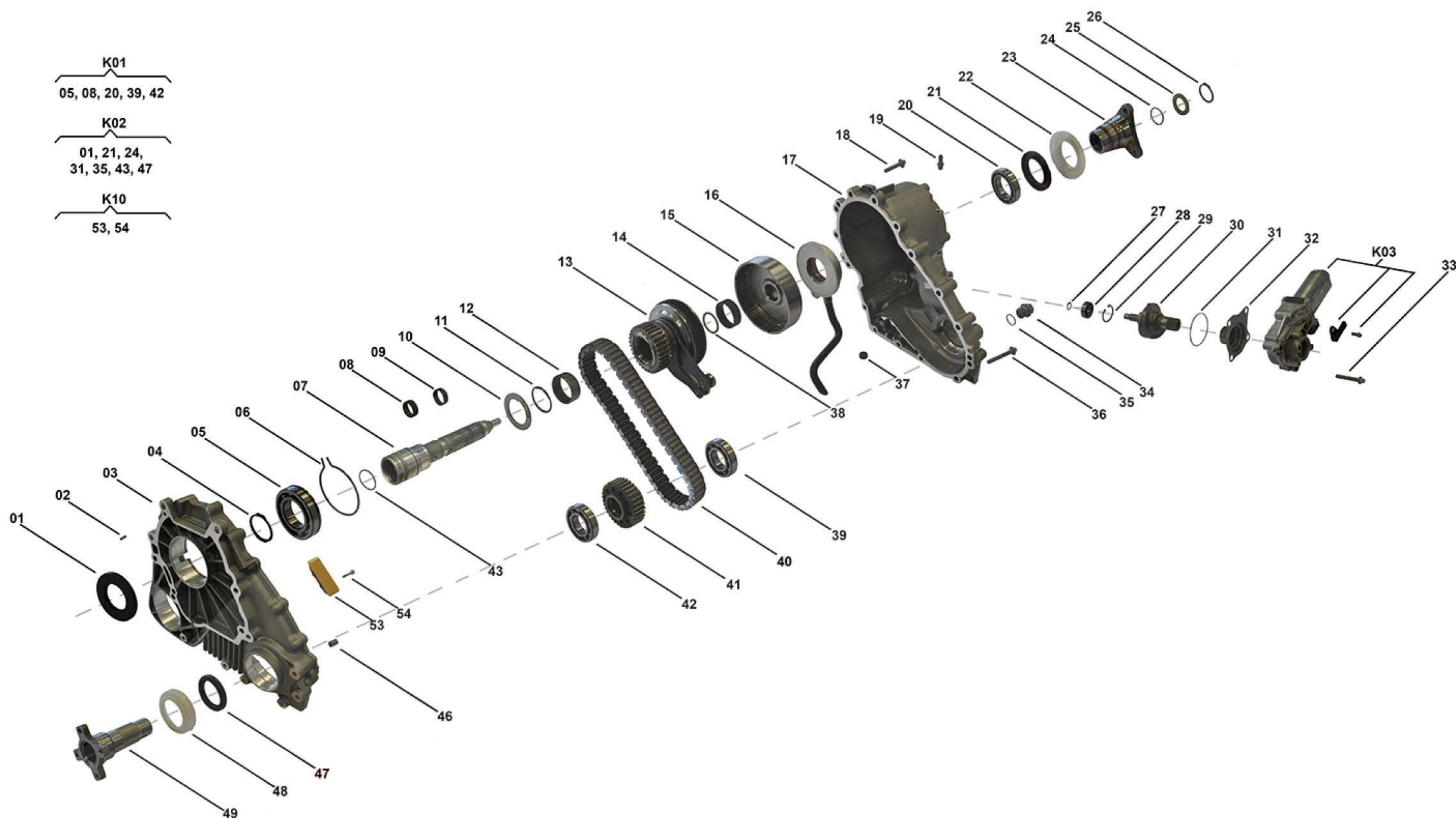
TC00037, TC00038, TC00061, TC00256

OEM No: 27103455132; 27103455135; 27103455136; 27103455137; 27103455138; 27103455139

Brands

Brand	Modelseries
BMW	X3

List of parts



Pos	Part number	OEM no	Quantity	Product name	Info
'K01	SP00742		1 piece	Bearing Kit	Contains position 05, 08, 20, 39, 42
'K02	SP00745		1 piece	Sealing Kit	Contains position 01, 21, 24, 31, 35, 43, 47
'K03	SP00097	27107566296	1 piece	Actuator Kit	
'K10	SP00194		1 piece	Sliding Block Kit	Contains position 53, 54
01	SP00165	27107539262	1 piece	Radial Sealing	
02	SP00154		1 piece	Pin	
03	Not available		1 piece	Housing Front	
04	SP00160		1 piece	Retaining Ring	
05	SP00151		1 piece	Ball Bearing	
06	SP00140		1 piece	Retaining Ring	
07	SP00763		1 piece	Main Shaft ASM	Information for ATC400: Used in 27103455133, 27103455134
07	SP00765		1 piece	Main Shaft ASM	Information for ATC400: Used in 27103455132, 27103455135, 27103455137
07	SP00766		1 piece	Main Shaft ASM	Information for ATC400: Used in 27103455136, 27103455138, 27103455139
08	SP00200		1 piece	Needle Bearing	
09	SP00741		1 piece	Tolerance Ring	

Transfer Case ATC400

TC00037, TC00038, TC00061, TC00256

OEM No: 27103455132; 27103455135; 27103455136; 27103455137; 27103455138; 27103455139

List of parts

Pos	Part number	OEM no	Quantity	Product name	Info
10	SP00139		1 piece	Thrust Washer	
11	SP00138		1 piece	Retaining Ring	
12	SP00136		1 piece	Needle Sleeve	
13	SP00188		1 piece	Sprocket Assy	
14	SP00133		1 piece	Needle Ring	
15	SP00145		1 piece	Drum	Information for ATC400: Used in 27103455133, 27103455134
15	SP00179		1 piece	Drum	Information for ATC400: Used in 27103455132, 27103455135, 27103455136, 27103455137, 27103455138, 27103455139
16	SP00177		1 piece	Oil Pump ASM	
17	Not available		1 piece	Housing Rear	
18	SP00180		9 pieces	Tapping Screw	
19	SP00128		1 piece	Vent Pipe	
20	SP00149		1 piece	Ball Bearing	
21	SP00095	27107539265; 331401LA0A	1 piece	Radial Sealing	
22	SP00101	27107537663; 331411LA0A	1 piece	Slinger	
23	SP00105	27107537662	1 piece	Flange Rear	Information for ATC400: Used in 27103455133, 27103455134, 27103455136, 27103455139
23	SP00106	27107565929	1 piece	Flange Rear	Information for ATC400: Used in 27103455138
23	SP00107	27107565930	1 piece	Flange Rear	Information for ATC400: Used in 27103455132, 27103455135, 27103455137
24	SP00096	27107537631	1 piece	O-Ring	
25	SP00114	27107537629	1 piece	Shim Set	
26	SP00112	27107539525; 331381LA0A	1 piece	Retaining Ring	
27	SP00157		1 piece	Retaining Ring	
28	SP00150		1 piece	Ball Bearing	
29	SP00158		1 piece	Retaining Ring	
30	SP00147		1 piece	Shaft Actuator Assy	
31	SP00153		1 piece	O-Ring	
32	SP00159		1 piece	Needle Sleeve	
33	SP00132	27107539410	4 pieces	Screw	
34	SP00120	27107571645	2 pieces	Plug	
35	SP00163	07119963308; 88896062; LR048842	2 pieces	Washer-Sealing	Information for ITC PLA: Used in LR023011, LR035617, LR045477, LR049160
36	SP00181		6 pieces	Tapping Screw	
37	SP00130	05143630AA; A2102760098	1 piece	Magnet	
38	SP00125		1 piece	Thrust Washer	
39	SP00186		1 piece	Ball Bearing	
40	SP00178	HV086	1 piece	Chain	
41	SP00190		1 piece	Sprocket	
42	SP00187		1 piece	Ball Bearing	
43	SP00164	27107537630	1 piece	O-Ring	
46	SP00155		2 pieces	Pin	
47	SP00099	27107539266	1 piece	Radial Sealing	
48	SP00103	27107537665	1 piece	Slinger	
49	SP00109	27107537664	1 piece	Flange Front	
53	Only available in K10		2 pieces	Sliding Block	

Transfer Case ATC400

TC00037, TC00038, TC00061, TC00256

OEM No: 27103455132; 27103455135; 27103455136; 27103455137; 27103455138; 27103455139

List of parts

Pos	Part number	OEM no	Quantity	Product name	Info
54	Only available in K10		4 pieces	Screw	
	OIL0005	00004330136; 83220397244; 83222409710	1 piece	Transmission Fluid	Shipment in 1 liter bottles. Fillgrade information please see Oil List.
	SP02000		1 piece	Sealant	Sealant SILICON BLACK (1pce = 300ml)