

# Transfer Case ATC45L

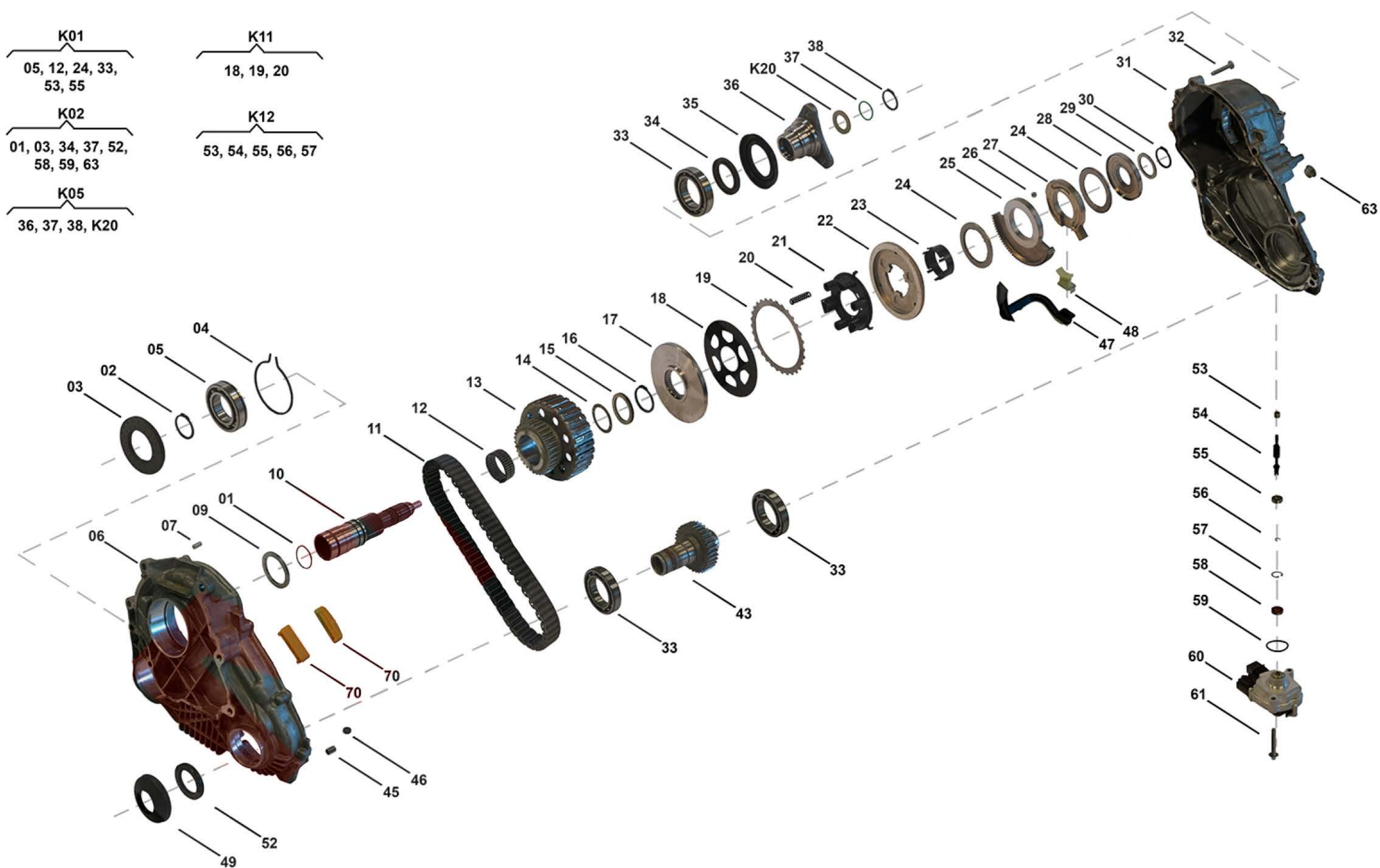
TC00396, TC00397, TC00401, TC00403, TC00416

OEM No: 27107643758; 27107643759; 27107854164; 27108643151; 27108643152

## Brands

Brand	Modelseries
BMW	X3; X4; X5; X6

## List of parts



Pos	Part number	OEM no	Quantity	Product name	Info
'I01	TC00396	27107643758		OE References	27107619644, 27107629177, 27107636444, 27107636487, 27107639273, 27107643758
'I02	TC00397	27107643759		OE References	27107619645, 27107629178, 27107636445, 27107636488, 27107639274, 27107643759

# Transfer Case ATC45L

TC00396, TC00397, TC00401, TC00403, TC00416

OEM No: 27107643758; 27107643759; 27107854164; 27108643151; 27108643152

## List of parts

Pos	Part number	OEM no	Quantity	Product name	Info
'I03	TC00401	27108643151		OE References	27107505376, 27107619646, 27107629179, 27107636180, 27107636489, 27107639265, 27107643760, 27107649784, 27108604770, 27108612554, 27108623348, 27108643151
'I04	TC00403	27108643152		OE References	27107505377, 27108604771, 27108612555, 27108623349, 27108643152
'I05	TC00416	27107854164		OE References	27107852166, 27107854164
'K01	SP01542		1 piece	Bearing Kit	Contains position 05, 12, 24, 33, 53, 55
'K02	SP01571		1 piece	Sealing Kit	Contains position 01, 03, 34, 37, 52, 58, 59, 63
'K05	SP00553	27107850489	1 piece	Flange Kit Rear	Contains position 36, 37, 38, K20  Information for ATC45L: Used in 27107854164
'K05	SP01501	27107595650; 27107645468	1 piece	Flange Kit Rear	Contains position 36, 37, 38, K20  Information for ATC35L: Used in 27108643150, 27108662968  Information for ATC45L: Used in 27107643758, 27107643759, 27108643151, 27108643152
'K11	SP01361		1 piece	Clutch Kit	Contains position 18, 19, 20
'K12	SP01581		1 piece	Shaft Actuator Kit	Contains position 53, 54, 55, 56, 57
'K20	SP00115	27107546670	1 piece	Shim Set	Contains 13 different Shims with Dimensions from 2.90mm up to 4.10mm
01	SP00445	27107609202	1 piece	O-Ring	
02	SP00312		1 piece	Locking Ring	
03	SP00165	27107539262	1 piece	Radial Sealing	
04	SP00140		1 piece	Retaining Ring	
05	Only available in K01		1 piece	Ball Bearing	
06	Not available		1 piece	Housing Front	
07	SP00154		1 piece	Pin	
09	SP01933		1 piece	Shim	
10	SP01635		1 piece	Shaft	
11	SP00443		1 piece	Chain	
12	Only available in K01		1 piece	Needle Bearing	
13	SP00563		1 piece	Gear ASM with Drum Clutch	
14	SP00386		1 piece	Thrust Washer	
15	Not available		1 piece	Shim	
16	SP01649		1 piece	Retaining Ring	
17	SP01650		1 piece	Plate Clutch Pack	
18	Only available in K11		10 pieces	Friction Plate	
19	Only available in K11		9 pieces	Steel Plate	
20	SP01657		3 pieces	Spring	

# Transfer Case ATC45L

TC00396, TC00397, TC00401, TC00403, TC00416

OEM No: 27107643758; 27107643759; 27107854164; 27108643151; 27108643152

## List of parts

Pos	Part number	OEM no	Quantity	Product name	Info
21	Not available		1 piece	Deflector	
22	SP01654		1 piece	Piston	
23	Not available		1 piece	Deflector	
24	Only available in K01		2 pieces	Needle Bearing	
25	SP01659		1 piece	Actuator Ring	
26	SP01666		3 pieces	Ball	
27	SP01661		1 piece	Actuator Ring	
28	SP01667		1 piece	Ring	
29	Not available		1 piece	Shim	
30	SP01213		1 piece	Retaining Ring	
31	Not available		1 piece	Housing Rear	
32	SP01042		8 pieces	Screw	
33	Only available in K01		3 pieces	Ball Bearing	
34	SP00113	27107546667	1 piece	Radial Sealing	
35	SP01499	27107597688	1 piece	Slinger	Information for ATC35L: Used in 27108643150, 27108662968
36	Only available in K05		1 piece	Flange Rear	
37	SP01037	27107599326	1 piece	Seal O-Ring	
38	SP00112	27107539525; 331381LA0A	1 piece	Retaining Ring	
43	SP00074		1 piece	Sprocket Output	
45	SP00155		2 pieces	Pin	
46	SP01315		1 piece	Magnet	
47	Not available		1 piece	Deflector Tube	
48	Not available		1 piece	Deflector	
49	SP00073	27107623529	1 piece	Slinger	
52	SP00055	27107623527	1 piece	Radial Seal Ring	
53	Only available in K01 & K12		1 piece	Needle Bearing	
54	Only available in K12		1 piece	Shaft Actuator	
55	Only available in K01 & K12		1 piece	Ball Bearing	
56	Only available in K12		1 piece	Retaining Ring	
57	Only available in K12		1 piece	Retaining Ring	
58	SP01038	27107593452	1 piece	Radial Seal Ring	
59	SP01040	27107593451; 95834150100	1 piece	Seal O-Ring	
60	Not available	27608643153	1 piece	Actuator Motor FR	Information for ATC350: Used in 27107643750  Information for ATC35L: Used in 27108643149, 27108643150, 27108662300, 27108662968  Information for ATC450: Used in 27107643753  Information for ATC45L: Used in 27108643151, 27108643152, 27107854164

# Transfer Case ATC45L

TC00396, TC00397, TC00401, TC00403, TC00416

OEM No: 27107643758; 27107643759; 27107854164; 27108643151; 27108643152

## List of parts

Pos	Part number	OEM no	Quantity	Product name	Info
60	SP02030	27607643762	1 piece	Actuator Motor CAN	Information for ATC350: Used in 27107643748, 27107643749  Information for ATC35L: Used in 27107643754, 27107643755  Information for ATC450: Used in 27107643751, 27107643752  Information for ATC45L: Used in 27107643758, 27107643759
61	SP01045	27107593450; 673002351; 90038507101; 95834150200	2 pieces	Screw	
63	SP00176	33117525064	1 piece	Plug	
70	SP00311		2 pieces	Pad	
	OIL0005	00004330136; 00004330563; 83220397244; 83222409710	1 piece	Transmission Fluid	Shipment in 1 liter bottles. Fillgrade information please see Oil List.
	SP02000		1 piece	Sealant	Sealant SILICON BLACK (1pce = 300ml)