

Rear Axle Drive HAA350+

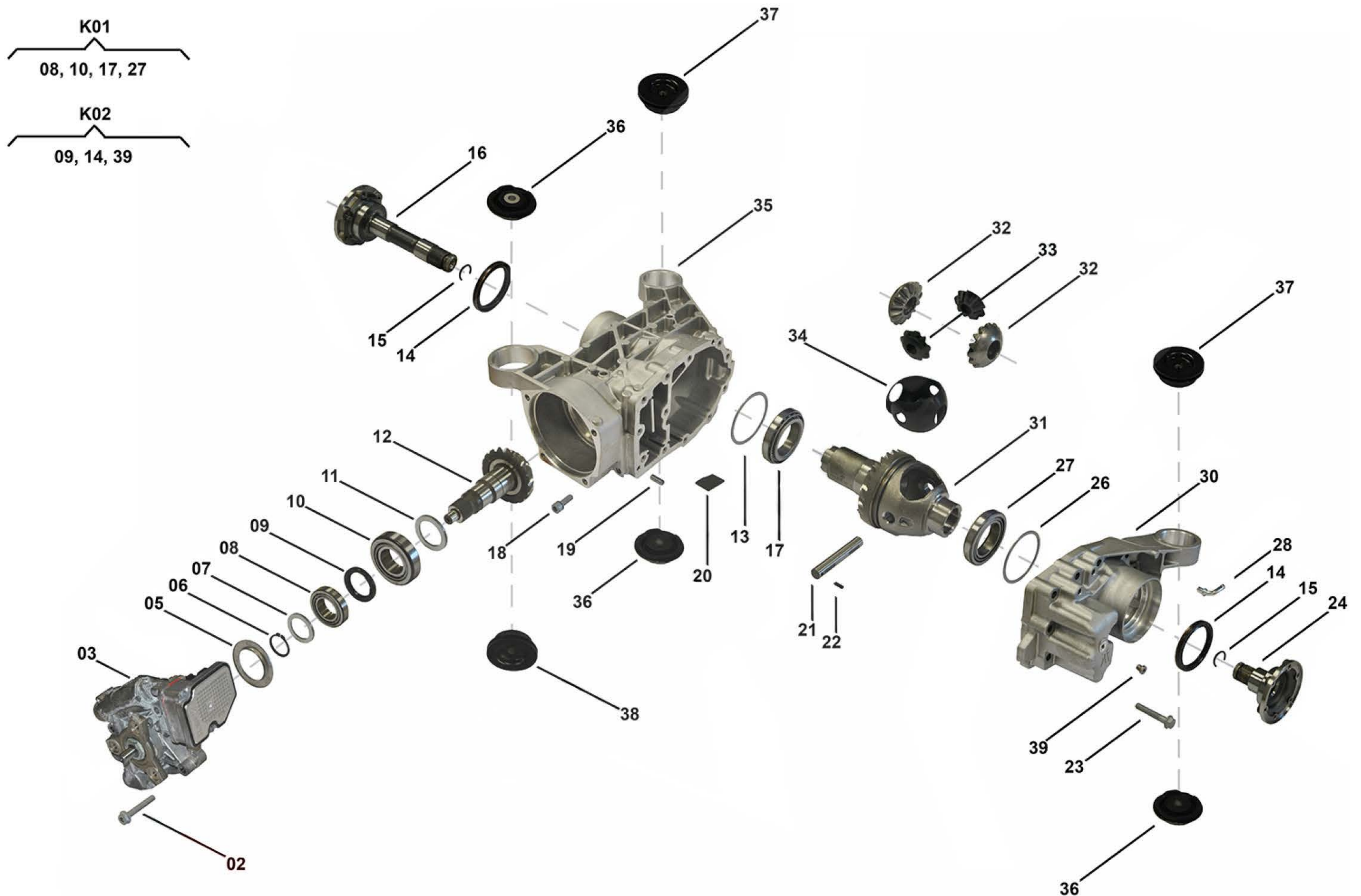
RD00022, RD00023, RD00056, RD00059, RD00060

OEM No: 0AV525010K; 0AV525010L; 0AV525010M; 0BR525010G; 0BR525010H

Brands

Brand	Modelseries
Audi	A3; S3; TT

List of parts



Pos	Part number	OEM no	Quantity	Product name	Info
'K01	SP01986		1 piece	Bearing Kit	Contains position 08, 10, 17, 27
'K02	SP01985		1 piece	Sealing Kit	Contains position 09, 14, 39
02	SP01993		4 pieces	Screw	Information for HAA350+ Skoda: Used in 0AV525010K, 0BR525010G
03	Not available		1 piece	Center Differential ASM	
05	SP01319		1 piece	Oil Guide Plate	Information for HAA350+ Audi: Used in 0BR525010G, 0BR525010H Information for HAA350+ SEAT: Used in 0BR525010G Information for HAA350+ Skoda: Used in 0BR525010E, 0BR525010G Information for HAA350+ VW: Used in 0BR525010G

Rear Axle Drive HAA350+

RD00022, RD00023, RD00056, RD00059, RD00060

OEM No: 0AV525010K; 0AV525010L; 0AV525010M; 0BR525010G; 0BR525010H

List of parts

Pos	Part number	OEM no	Quantity	Product name	Info
06	SP01994		1 piece	Retaining Ring	
07	Not available		1 piece	Shim	
08	Only available in K01		1 piece	Taper Bearing	
09	SP01314	02D525275M	1 piece	Radial Sealing	
10	Only available in K01		1 piece	Taper Bearing	
11	Not available		1 piece	Shim	
12	SP01318		1 piece	Pinion Gear	
13	Not available		1 piece	Shim	
14	SP00603	02D525596B	2 pieces	Seal Ring	
15	SP01341	A0049949840	2 pieces	Snap Ring	
16	SP01335	02D525356	1 piece	Shaft Flange Right	
17	Only available in K01		1 piece	Taper Roller Bearing	
18	SP01995		1 piece	Screw	
19	SP01996		2 pieces	Pin	
20	SP01998	01Z525615	2 pieces	Magnet	<p>Information for PL72 ATC: Used in 95834101001 - 95834101005, 95834101011 - 95834101015, 95834101020 - 95834101024, 95834101030</p> <p>Information for PL72 T Audi: Used in 0BU341010N, 0BU341010P, 0BU341010Q</p> <p>Information for PL72 T Porsche: Used in 95834102001, 95834102002, 95834102011</p> <p>Information for PL72 T VW: Used in 0BU341010B, 0BU341010C, 0BU341010D, 0BU341010E, 0BU341010F, 0BU341010M, 0BU341010P, 0BU341010R, 0BU341010S, 0BU341010T, 0BU341011_, 0BU341011A, 0BU341011C, 0BU341011D, 0BU341011G, 0BU341011H, 0BU341011P</p>
21	SP01362		1 piece	Poppet	
22	SP01997		1 piece	Pin	
23	SP00635		12 pieces	Hexagon Flange Screw	
24	SP01332	02D525355B	1 piece	Shaft Flange Left	
26	Not available		1 piece	Shim	
27	Only available in K01		1 piece	Taper Bearing	
28	SP01359	02D525118C	2 pieces	Angled Pipe	
30	Not available		1 piece	Cover Left	
31	Not available		1 piece	Differential Housing ASM	
32	SP01320		2 pieces	Gear Differential Spider	
33	SP01321		2 pieces	Gear Differential Spider	
34	Not available		1 piece	Thrust Washer Compound	
35	Not available		1 piece	Cover Right	
36	SP01339	1K0599438A	3 pieces	Mounting	Information for HAA350+ Audi: Used in 0AV525010K, 0AV525010L, 0BR525010G
36	SP01342		3 pieces	Mounting	Information for HAA350+ Audi: Used in 0AV525010M, 0BR525010H
37	SP01338	1K0599437A	2 pieces	Mounting	Information for HAA350+ Audi: Used in 0AV525010K, 0AV525010L, 0BR525010G
37	SP01340		2 pieces	Mounting	Information for HAA350+ Audi: Used in 0AV525010M, 0BR525010H
38	SP01312	1K0599431A	1 piece	Mounting	Information for HAA350+ Audi: Used in 0AV525010K, 0AV525010L, 0BR525010G

Rear Axle Drive HAA350+

RD00022, RD00023, RD00056, RD00059, RD00060

OEM No: 0AV525010K; 0AV525010L; 0AV525010M; 0BR525010G; 0BR525010H

List of parts

Pos	Part number	OEM no	Quantity	Product name	Info
38	SP01337		1 piece	Mounting	Information for HAA350+ Audi: Used in 0AV525010M, 0BR525010H
39	Only available in K02		3 pieces	Plug	
	SP02000		1 piece	Sealant	Sealant SILICON BLACK (1pce = 300ml)